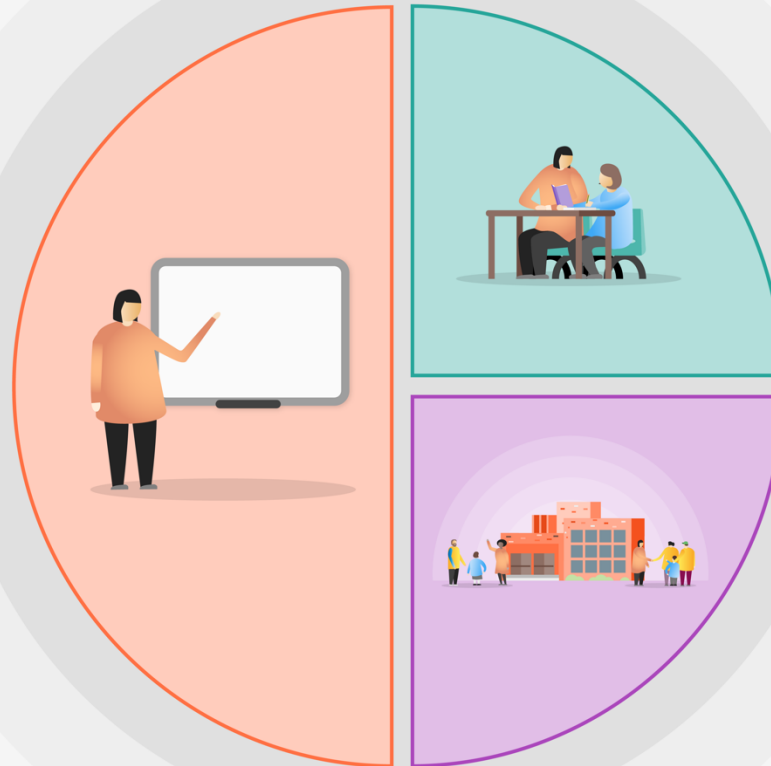


1 Teaching

Staff are working on improving the curriculum using a knowledge-based approach



2 Targeted academic support

School have identified a gap in terms of personnel to deliver quality mathematics interventions to pupils.

Catch-up premium has been used to employ a part time maths tutor (qualified maths teacher) to deliver interventions.

Interventions in other areas are taking place using existing staff

3 Wider strategies

School has ensured children have additional wider cultural experiences using the outdoors as the stimulus